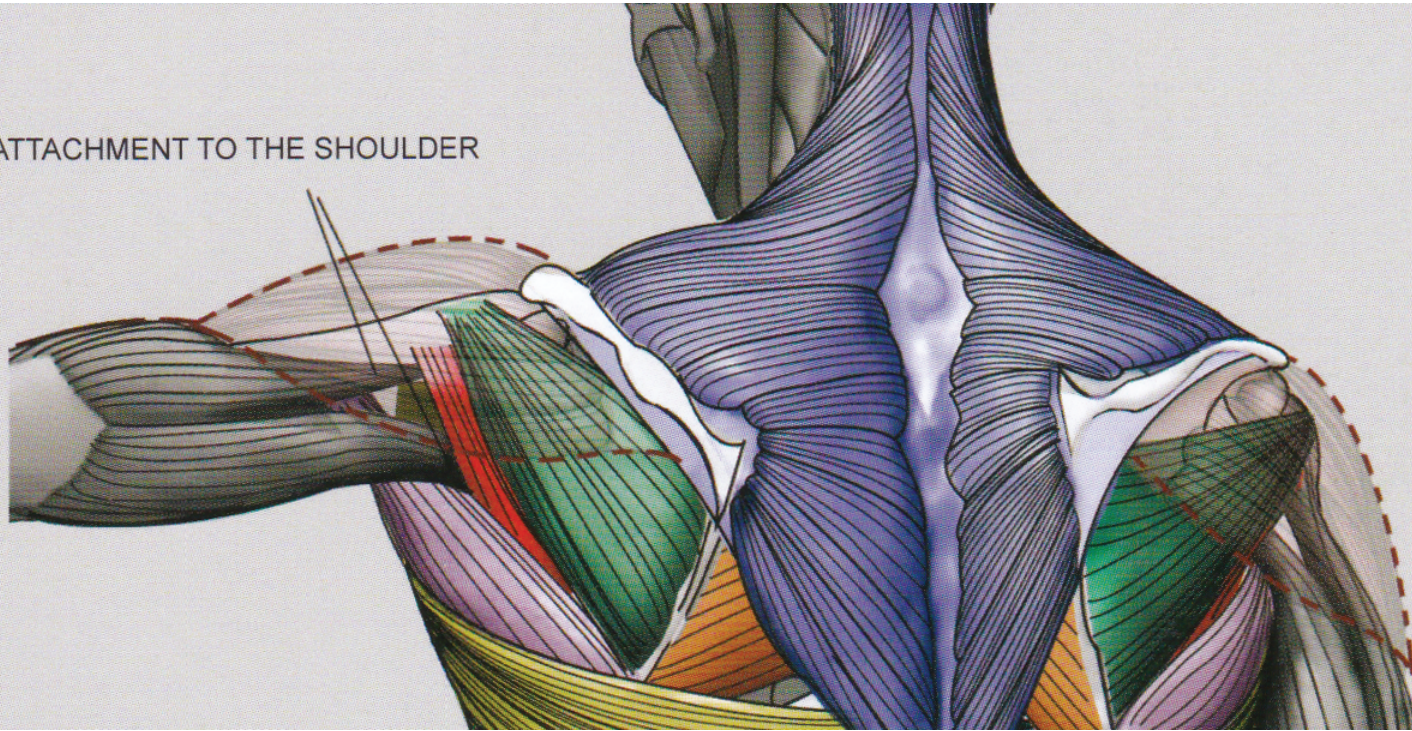
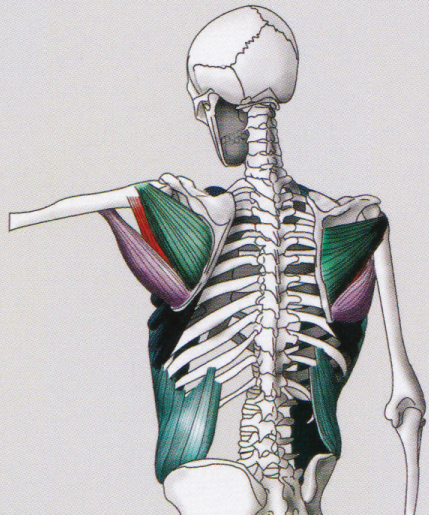


TRICEPS ATTACHMENT TO THE SHOULDER

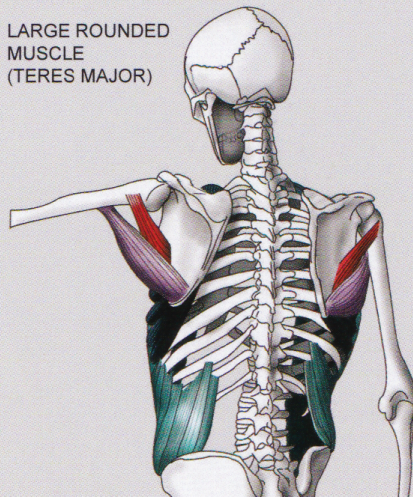


● INFRASPINATUS



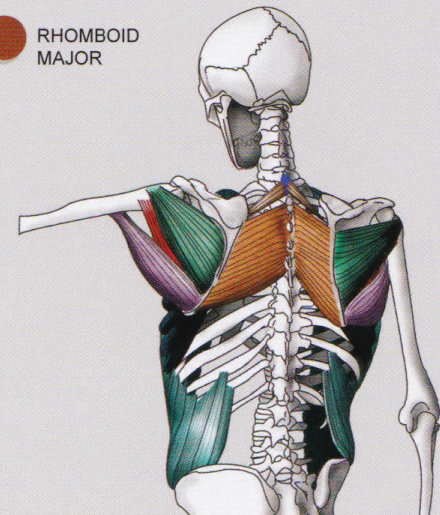
● SMALL ROUNDED MUSCLE (TERES MINOR)

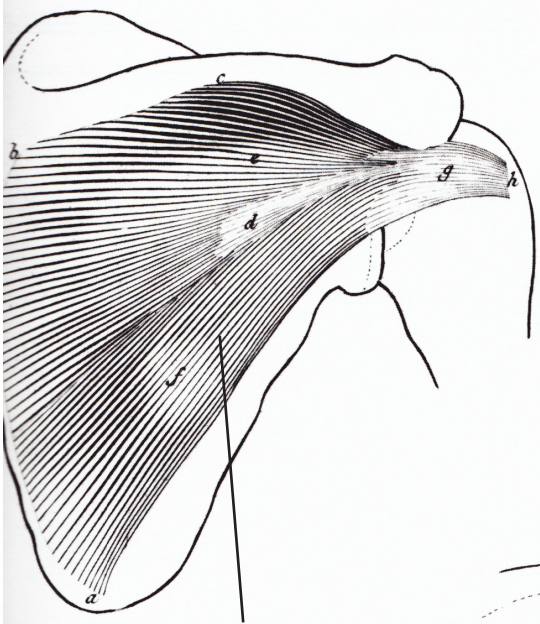
● LARGE ROUNDED MUSCLE (TERES MAJOR)



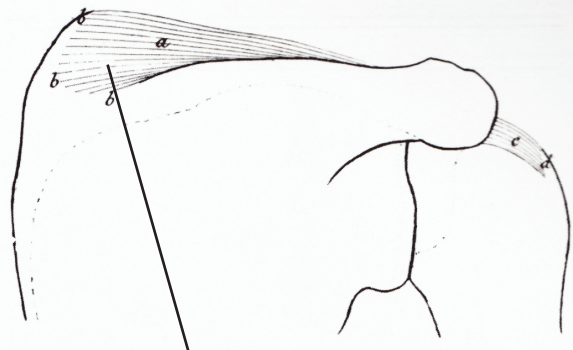
● RHOMBOID MINOR

● RHOMBOID MAJOR





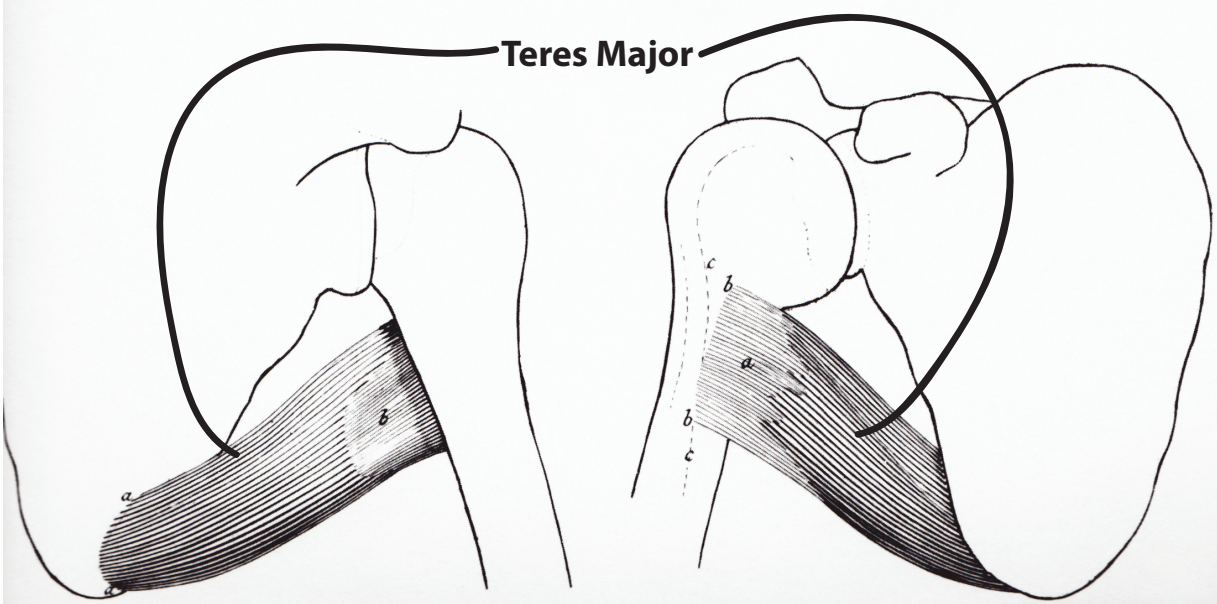
Infraspinatus



Supraspinatus



Teres minor



Teres Major